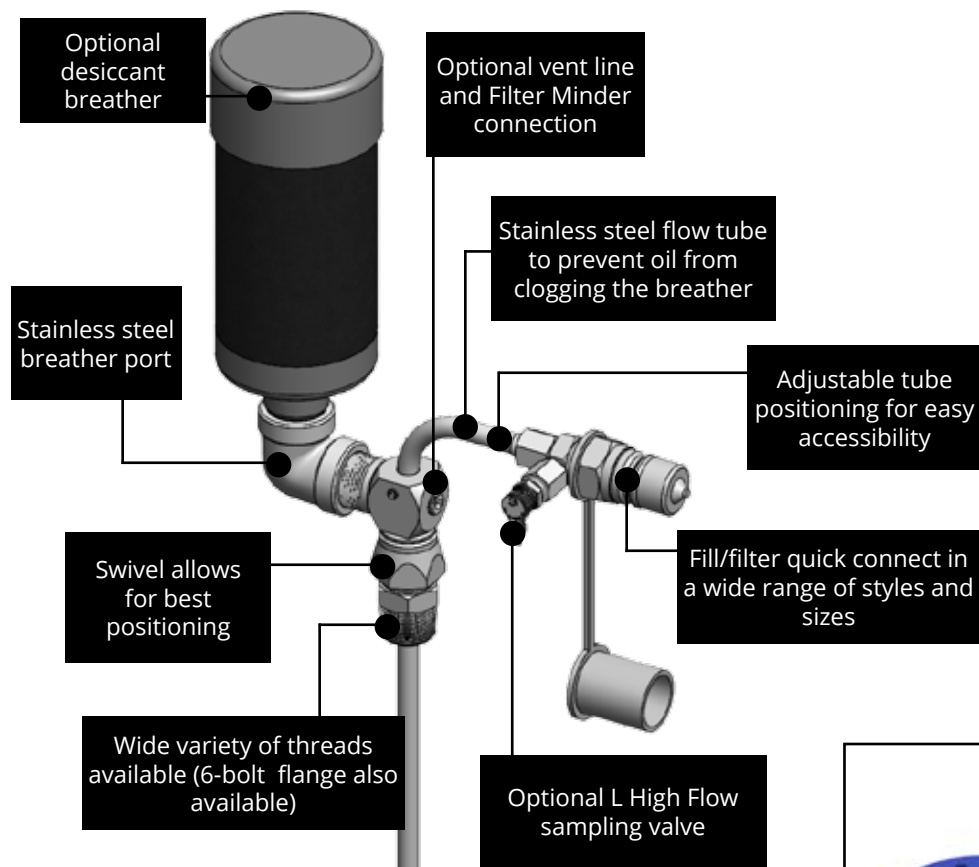


The AB Breather Mount

Optimize the breather port with an AB Mount. Mount a desiccant breather, a fill port, a filter minder, sampling tube and a return vent line while maintaining a closed system.

Combined with the AD Mount for a complete fluid maintenance system [The CORE Solution]. Option to add a High Flow Sampling Valve if not combining with the AD Drain Mount

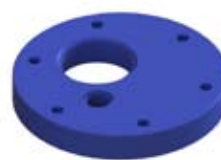


Options not shown:

- Oil Mist Coalescer
- Filter Minder

- Optional desiccant breather offers better filtration to protect against moisture and particulates that can destroy your system
- Optional high flow sampling valve allows you to get reliable oil samples directly from the active oil zone
- Add an Oil Mist Coalescer (OMC) with a 5" stainless pipe riser which helps elevate the desiccant breather and minimize premature clogging of the desiccant breather
- Port thread adapter or 6-bolt flange provides a variety of options to fit most gearboxes/reservoirs
- **Sampling range 0 - 125 psi (0 - 0.86 MPa)**

Optional 6-Bolt Flange Mount



- AB16 Flange Breather Mount
- Rugged aluminum base combines fluid monitoring with one 6-bolt breather mount

Part Number	Port	Port Adapter Size	Quick Connect Size	Plugged Port	Tube Length	Tube OD	Tube Material
ABQ16-16N	Breather	1" NPTF	3/4" ISO B	Yes	12"	1/2"	Stainless Steel
AB16-16N	Breather	1" NPTF	1/2" ISO B	Yes	12"	1/2"	Stainless Steel

Other custom options are also available

